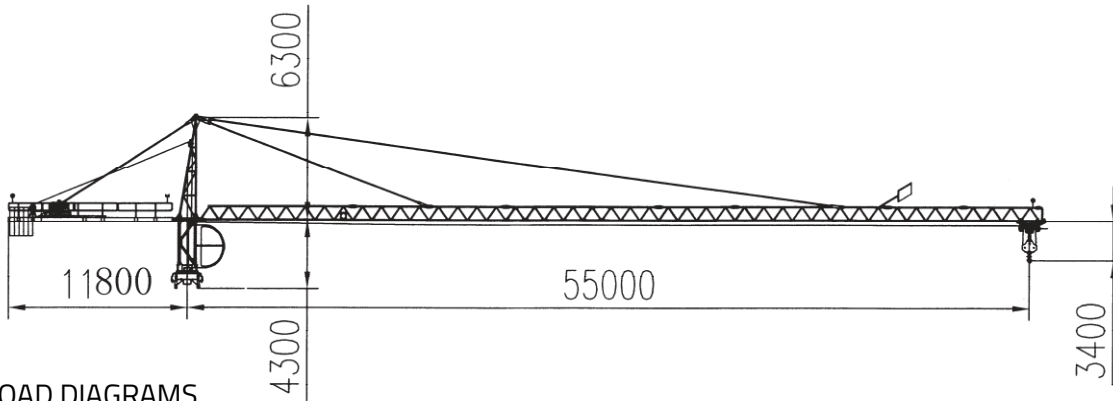




ESPECIFICACIONES TÉCNICAS




LOAD DIAGRAMS

55m 


2.9	~	16.7	18	20	22	25	28	30	32	35	38	40	42	45	48	50	52	55	m
b_d		6.0	5.51	4.85	4.32	3.68	3.19	2.91	2.67	2.37	2.11	1.96	1.83	1.65	1.49	1.40	1.31	1.2	t

50m 

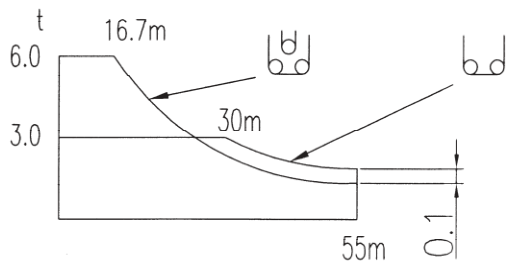
2.9	~	16.7	18	20	22	25	28	30	32	35	38	40	42	45	48	50	m
b_d		6.0	5.51	4.85	4.32	3.68	3.19	2.91	2.67	2.37	2.11	1.96	1.83	1.65	1.49	1.40	t

45m 

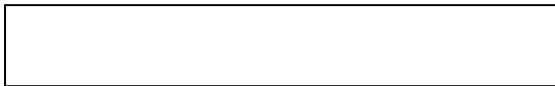
2.9	~	16.7	18	20	22	25	28	30	32	35	38	40	42	45	m
b_d		6.0	5.51	4.85	4.32	3.68	3.19	2.91	2.67	2.37	2.11	1.96	1.83	1.65	t

40m 

2.9	~	16.7	18	20	22	25	28	30	32	35	38	40	m
b_d		6.0	5.51	4.85	4.32	3.68	3.19	2.91	2.67	2.37	2.11	1.96	t



$$b_d = b_{d'} + 0.1$$



MAIN PARAMETERS

SPEED AND POWER

Hoisting mechanism						Slewing mechanism	Trolleying mechanism
22 kw						95 Nm	3.3/2.2 kw
2-fall	0-64 m/min	1500 kg	4-fall	0-32 m/min	3000 kg	95SVT	3T2V4
	0-48 m/min	2250 kg		0-24 m/min	4500 kg		
	0-32 m/min	3000 kg		0-16 m/min	6000 kg	0.8 m/min	44/22 m/min

Total Power: 70KVA

Load

Jib (m)	55	50	45	40
Counter-jib (m)	11.5	11.5	11.5	11.5
Ballast (kg)	13800	12600	11200	10600

1.2 Hoist mechanism

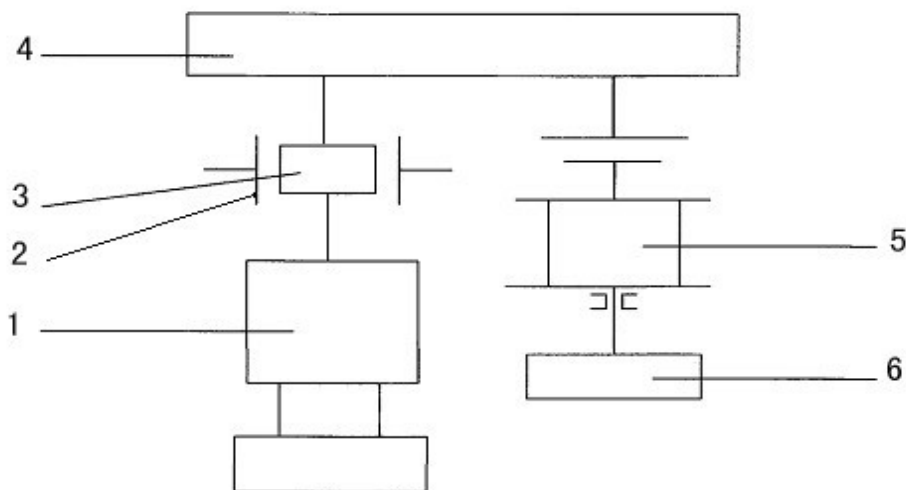
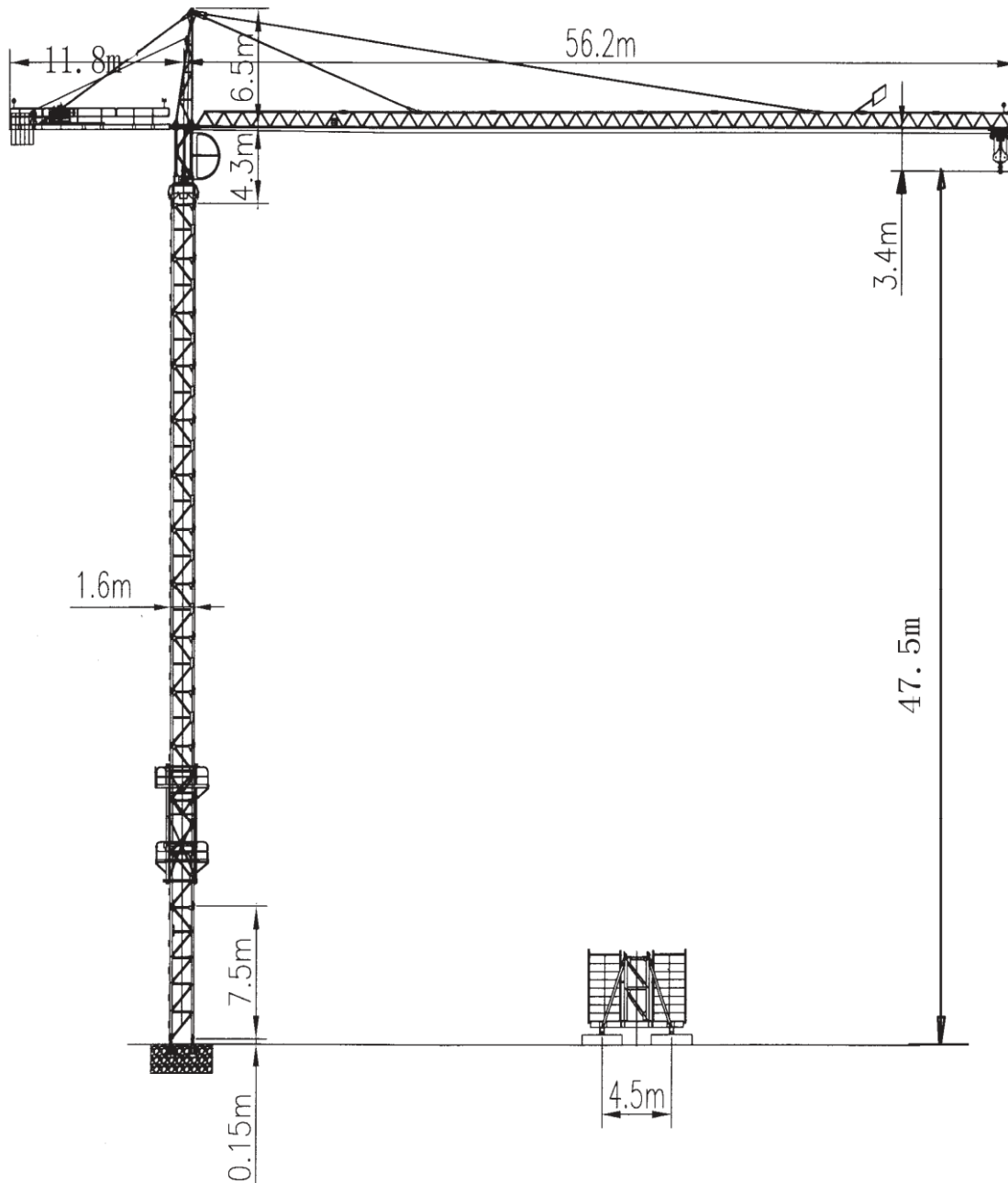


Fig.1-1 Hoist Mechanism Sketch

- 1. Motor 2. Brake 3. Coupling
- 4. Reduction Gear 5. Drum 6. Travel Limiter

2.1.2.2 Overall dimensions mast L44A1V



CASA MATRIZ: Camino Coquimbo N°16.776, Condominio Industrial los Libertadores, Colina Santiago, Chile.

Tel: 562 2484 2100

LA SERENA: Parcela 110, Lote 3A, Vegas Norte.

CONCEPCIÓN: Camino a Coronel km. 11, Parque San Pedro, Módulo 15 N°6060, San Pedro de la Paz.

PERÚ ETAC: Avenida el Sol MZ J1 Lt B1 Villa el Salvador Lima.

COLOMBIA COLGRÚA: Calle 19 # 50-13, Bogotá.

TELÉFONO EMERGENCIAS

+56 9 9228 3427