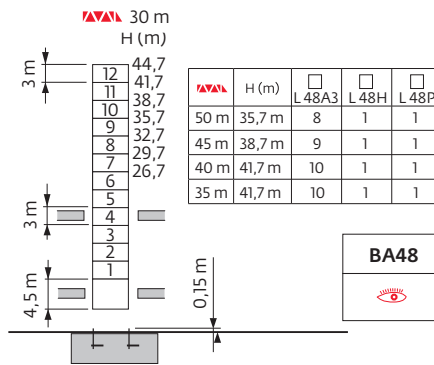
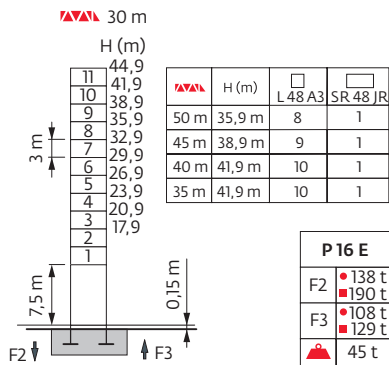
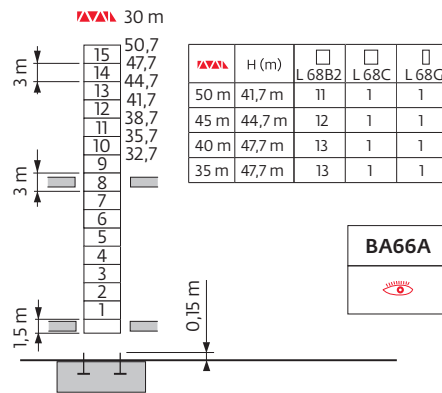
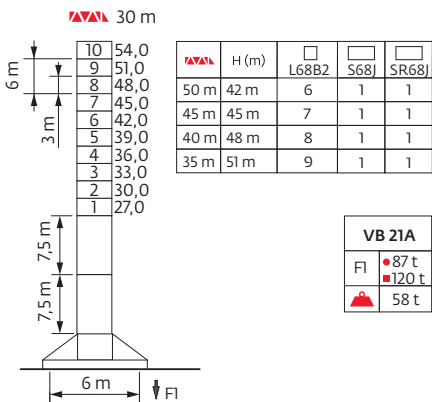
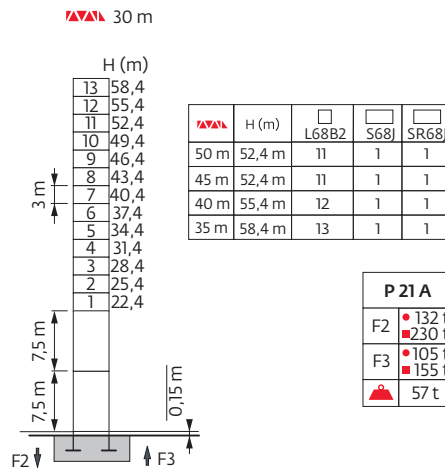
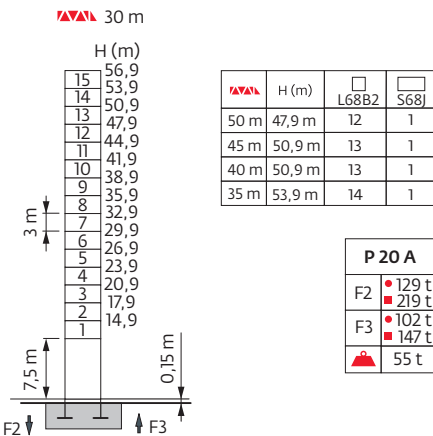


Mât - Réactions / Mast - Reaktionskräfte / Mast - Reactions / Mástil - Reacciones / Torre - Reazioni
 Tramo - Reacções / Реакция опор мачты

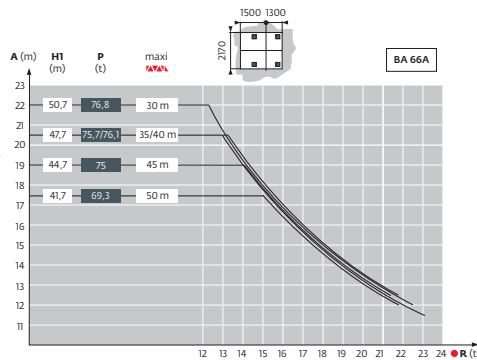
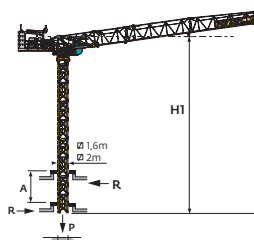
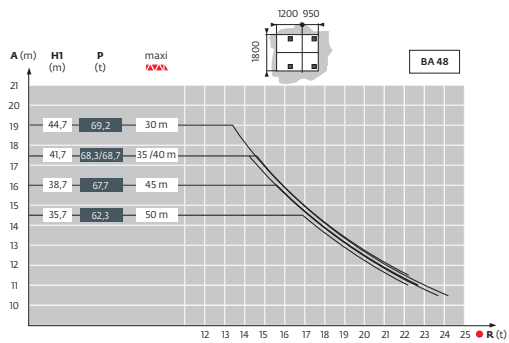
1,6 m





2 m



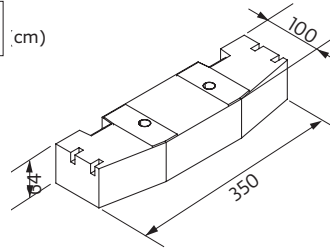
Télescopage sur dalles / Kletterkrane im Gebäude / Climbing Crane / Telescopage grua trepadora / Gru in cavedio
 Telescopagem sobre lajes / Кран, ползущий внутри здания






Lest de contre-flèche / Gegenauslegerballast / Counter-jib ballast / Lastre de contra-flecha / Zavorra di controbraccio
 Lastro da contra lança / Противовес стрелы

	4750 kg	 (kg)
30 m	4	19000
35 m	4	19000
40 m	4	19000
45 m	4	19000
50 m	4	19000

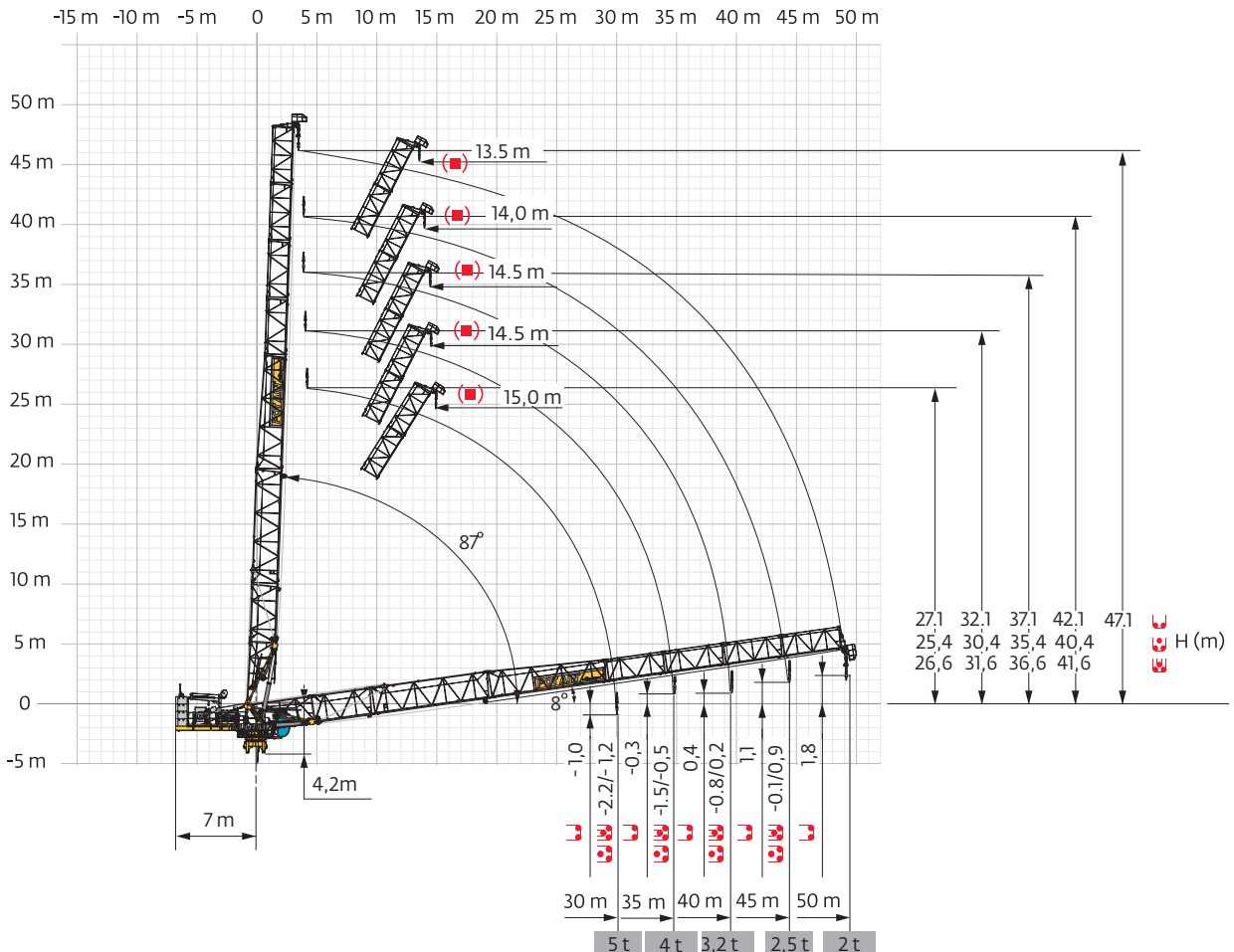
CCL - 4750 kg (cm)



Lest de base / Grundballast / Base ballast / Lastre de base / Zavorra di base
 Lastro da base / Базовый Балласт

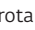
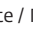


	VB 21	 H (m)	30 m	35 m	40 m	45 m	50 m
		2 m	 (t)	132	132	132	132

Flèche relevée / Ausleger in Steilstellung / Luffing jib / Flecha izada / Braccio impennato
 Lança inclinada / Маховая стрела

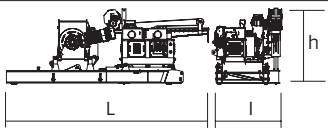
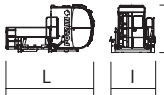
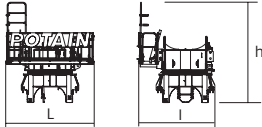

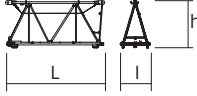
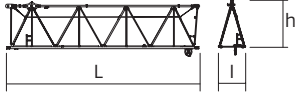

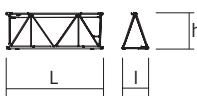

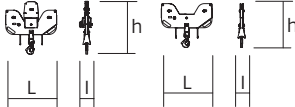

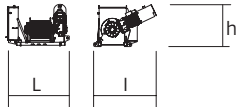


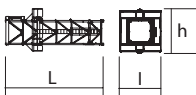
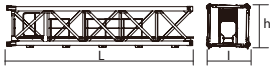
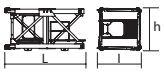
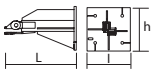
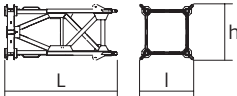
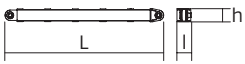
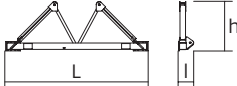
Encombremet et poids / Abmessungen und Gewicht / Dimensions and weight / Dimensiones y peso / Ingombro e peso / dimensões e pesos / габаритные размеры и вес

Partie tournante / Drehender Kranteil / Slewing crane part / Parte giratoria












Parte rotante / Parte rotativa / Поворотная часть :  50 m -  -  -  40LVF / 60LVF



Partie tournante / Drehender Kranteil / Slewing crane part Parte giratoria / Parte rotante / Parte rotativa Поворотная часть		L (m)	l (m)	h (m)	kg (+/- 5%)	
Contre-flèche / Gegenausleger Counter-jib / Contra-flecha Controbraccio / Contra-lança Контр-стрела		40LVF 6,63 60LVF 6,63	2,18 2,18	2,47 2,47	5882 5982	
Cabine / Kabine Cab / Cabina Cabina / Cabina Кабина		V140SR	4,85	2,37	2,50	1800
Pivot / Krankopf Towerhead / Pivote Portaralla / Pivot Секция поворотной части		1,6 m 2,0 m	3,17 3,17	2,8 2,8	3,6 3,6	5000 6200
Elément de flèche / Auslegerement Jib section / Elemento de flecha Elemento di braccio / Elemento de lança Секция стрелы		①	6,24	2,08	2,56	5901
Elément de flèche / Auslegerement Jib section / Elemento de flecha Elemento di braccio / Elemento de lança Секция стрелы		②	5,23	1,59	2,52	986
Elément de flèche / Auslegerement Jib section / Elemento de flecha Elemento di braccio / Elemento de lança Секция стрелы		③	10,25	1,44	2,5	1455
Elément de flèche / Auslegerement Jib section / Elemento de flecha Elemento di braccio / Elemento de lança Секция стрелы		④	10,21	1,42	2,37	1426
Elément de flèche / Auslegerement Jib section / Elemento de flecha Elemento di braccio / Elemento de lança Секция стрелы		⑤ ⑥ ⑦ ⑧	5,17 5,15 5,15 5,15	1,42 1,39 1,38 1,38	1,96 1,93 1,92 1,91	473 396 355 304
Elément de flèche / Auslegerement Jib section / Elemento de flecha Elemento di braccio / Elemento de lança Секция стрелы			1,23	1,48	3,05	180
Moufle / Hubflasche Pulley block / Aparejo Bozzello / Cadernal Полиспаст			1,46 1,46	0,36 0,22	1,50 1,25	380 200
Treuil de levage (+ câble) / Hubwerk (+ Seil) Hoisting winch (+ rope) / Mecanismo de elevación (+ cabo) Argano di sollevamento (+ fune) Guincho de elevação (+ cabo) Подъемная лебедка (+ канатом)		40 LVF 60 LVF	2,04 2,02	2,08 2,03	1,37 1,35	1439 1538

Equipement de télescopage / Teleskopierausrüstung / Telescoping equipment Equipo de telescopaje / Equipaggiamento di telescopaggio / Equipamento de telescopagem Оборудование для телескопирования			L (m)	l (m)	h (m)	kg (+/- 5%)
Cage de télescopage / Teleskopwagen Telescopic cage / Jaula de telescopaje Gabbia di telescopaggio / Gaiola de telescopagem для телескопирования крана		□2 m □1,6 m	7,3 6,8	4,3 3,65	4,3 3,6	4605 3730
Mât / Mastwerk / Masts Mástil / Torre / Coluna Мачты						
S 68J SR 68J SR 48 JR		□2 m □2 m □1,6 m	7,74 7,74 7,8	2,1 2,1 1,8	2,1 2,1 1,7	4170 5175 3185
L 68 B3 L 48 A3		□2 m □1,6 m	3,26 3,24	2,12 1,67	2,12 1,73	1530 1363
Bases / Kranbasen / Crane bases Bases / Basi / Bases фундамент под кран						
Pieds de scellement / VerankerungsfüÙe Fixing angles / Pie de empotramiento Montante da annegare / Angulos fixadores анкера		P 16 E P 20 A P 21 A	1,3 1,4 1,3	0,8 0,6 0,8	0,8 0,6 0,8	500 300 500
Mât-châssis / Grundmasteinheit Basic mast unit / Tramo-chassis Elemento base / Tramo-chassis Мачта для крепления к шасси		VB 21 A	5,07	2,39	2,39	4360
Haubans / Mastabstützungen Struts / Tornapuntas Puntoni / Escoras Растяжка		VB 21 A	4,51	0,26	0,27	390
Sommier / Unterwagenhälfte Half-bearer / Testero Testata / Estrutura base Траверса		VB 21 A	6,7	0,7	2,31	1600

Mécanismes / Triebwerke / Mechanisms / Mecanismos / Meccanismi
Mecanismos / Механизмы

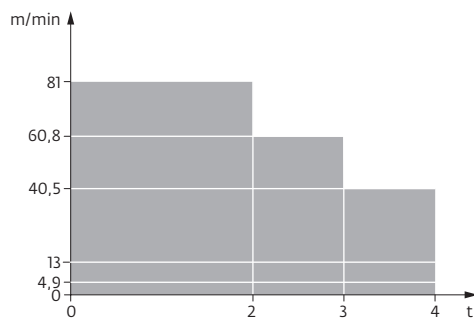
400 V - 50 Hz												hp	kW		
	40 LVF 20	m/min	4,9	13	40,5	60,8	81	2,5	6,5	20,3	30,4	40,5	40	30	456 m
		t	4	4	4	3	2	8	8	8	8	6			
	60 LVF 20	m/min	6	16	50	75	100	3	8	25	37,5	50	60	45	553 m
		t	4	4	4	3	2	8	8	8	6	4			
	40 VVH 80	min	2										40	30	
	RVF 152 Optima +	rpm	0 → 0,8										2 x 5,5	2 x 4	
VB 21 A		m/min													

 IEC 60204-32	 kVA
400 V (+10% -10%) 50 Hz	40 LVF : 74 kVA 60 LVF : 90 kVA

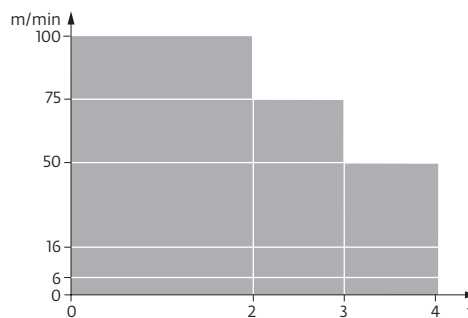
480 V - 60 Hz													hp	kW	
	40 LVF 20	m/min	4,9	13	40,5	60,8	81	2,5	6,5	20,3	30,4	40,5	40	30	456 m
		t	4	4	4	3	2	8	8	8	6	4			
	60 LVF 20	m/min	6	16	50	75	100	3	8	25	37,5	50	60	45	553 m
		t	4	4	4	3	2	8	8	8	6	4			
	40 VVH 80	min	2									40	30		
	RVF 152 Optima +	rpm	0 → 0,8									2 x 5,5	2 x 4		
VB 21A		m/min													

IEC 60204-32	kVA
480 V (+6% -10%) 60 Hz	40 LVF : 80 kVA 60 LVF : 96 kVA

40 LVF 20



60 LVF 20



FR

- Réactions en service
- Réactions hors service
- A vide sans lest avec flèche et hauteur maximum
- Poids total du lest
- Camion 13.4 m
- Conteneur High Cube 40"
- Cadre d'ancrage serré
- Cadre d'ancrage desserré
- Levage
- Relevage
- Orientation
- Translation
- Puissance nominale
- Voir télescope sur dalles
- Nous consulter

DE

- Reaktionskräfte in Betrieb
- Reaktionskräfte außer Betrieb
- Ballast. mit Ausleger und max. Höhe
- Ballast-Gesamtgewicht
- Lkw 13.4 m
- Container High Cube 40"
- Fester Verankerungsrahmen
- Loser Verankerungsrahmen
- Heben
- AL-Verstellen
- Schwenken
- Kranfahren
- Nennleistung
- Siehe Kletterkrane im Gebäude
- Auf Anfrage

EN

- Reactions in service
- Reactions out of service
- Weight without load. without ballast. with jib and max. height
- Total ballast weight
- Lorry 13.4 m
- Container High Cube 40"
- Tightened anchorage frame
- Loosened anchorage frame
- Hoisting
- Luffing
- Stewing
- Travelling
- Rated power
- See climbing crane
- Consult us

ES

- Reacciones en servicio
- Reacciones fuera de servicio
- Peso en vacío sin lastre. con flecha y altura máxima
- Peso total del lastre
- Camión 13.4 m
- Contenedor High cube 40"
- Marco de anclaje de apriete
- Marco de anclaje de desapriete
- Elevación
- Izado
- Orientación
- Traslación
- Potencia nominal
- Vea grúa trepadora
- Consultarnos

IT

- Reazioni in servizio
- Reazioni fuori servizio
- Peso a vuoto. senza zavorra. con braccio e altezza massimi.
- Peso totale della zavorra
- Camion 13.4 m
- Container High Cube 40"
- Quadro di ancoraggio stretto
- Quadro di ancoraggio allentato
- Sollevamento
- Brandeggio
- Rotazione
- Traslazione
- Potenza nominale
- Consultare gru in cavedio
- Consultateci

PT

- Reacções em serviço
- Reacções fora de serviço
- Peso em vazio sem lastro com lança e altura máxima.
- Peso total do lastro
- Camião 13.4 m
- Contentor 40"
- Quadro de amarração apertado
- Quadro de amarração solto
- Elevação
- Levantamento
- Rotação
- Translação
- Potência nominal
- Ver telescopagem sobre lages
- Consultar-nos

RU

- Реакция при работе
- Реакция в покое
- Вес пустого. без балласта. со стрелой. максимальной высоты.
- Общий вес балласта
- Рзрузовой автомобиль 13.4 м
- Контейнер повышенной вместимости длиной 40"
- Прикрепленная анкерная рама
- Отсоединенная анкерная рама
- Подъем
- Маховый подъем
- Поворот
- Перемещение крана
- Номинальная мощность
- См. кран. ползущий внутри здания
- Проконсультируйтесь у нас

CASA MATRIZ: Camino Coquimbo N°16.776, Condominio Industrial los Libertadores, Colina Santiago, Chile.

Tel: 562 2484 2100

LA SERENA: Parcela 110, Lote 3A, Vegas Norte.

CONCEPCIÓN: Camino a Coronel km. 11, Parque San Pedro, Módulo 15 N°6060, San Pedro de la Paz.

PERÚ ETAC: Avenida el Sol MZ J1 Lt B1 Villa el Salvador Lima.

COLOMBIA COLGRÚA: Calle 19 # 50-13, Bogotá.

TELÉFONO EMERGENCIAS
+56 9 9228 3427